

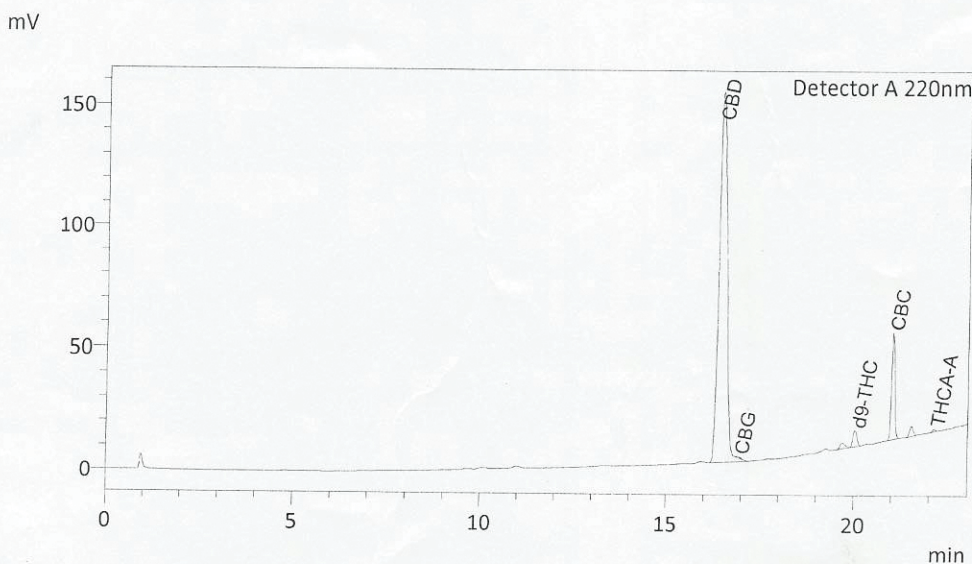


Certificate of Analysis

Sample Information

Client : HempVet
 Sample ID : HV2001_01072020
 Sample Type : Tincture, Hempseed Oil
 Analyst : KB
 Receipt Date : NA
 Test Date : 1/7/2020

Chromatogram



Cannabinoid Summary

Detector A

ID#	Name	Weight %
1	CBDV	0.00
2	CBD	9.88
3	CBG	0.03
4	CBDA	0.00
5	CBGA	0.00
6	CBN	0.00
7	d9-THC	0.21
8	d8-THC	0.00
9	CBC	1.13
10	THCA-A	0.03

Total CBD	9.88	%
Total CBD	98.79	mg/g
Total THC	0.24	%
Total THC	2.39	mg/g



Percentage data represents weight percentage of sample as received by Kria Botanicals.
 The collected data was compared to data collected for certified reference standards at known concentrations.
 Total THC = THCa * 0.877 + d9-THC; Total CBD = CBDA * 0.877 + CBD; Instrument: High Performance Liquid Chromatography (HPLC)
 A value of 0.00 indicates that the cannabinoid was not detected (ND), however it could be present at a level below the limit of detection.